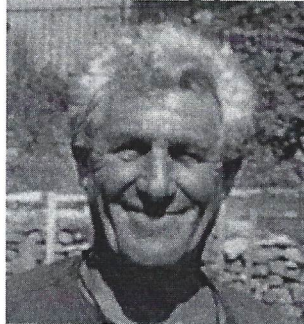


Ron Kushner  
334 Flourtown Road  
Lafayette Hill, PA 19444  
484-433-8846  
ronthelottoman@gmail.com



I am recommending the program **WINDFALL One!** in order for you to develop a nice income for the new year. If you join for \$10 and do nothing else, you will still receive payments as your automatic re-entries cycle. However, your potential rewards will be far greater with a more aggressive approach as described in your welcome package.

This is NOT a "get rich quick" scheme – there are plenty of those circulating already. It is simply a Supplemental Income Plan, intended to add to each member's monthly income. It is a LONG-TERM effort with your income constantly increasing over time.

**Windfall One** is really more of an investment program. Many people do it without recruiting at all and just work on their own matrix. I put \$25 per month away in order to buy each level in succession. I just sent in \$100 for level four and now, it will take me 8 more months to have \$200 for level five (@\$25 per month). Once I am in level five, I will start again with level one the next month (2 positions for \$10 each). Then the next month \$25 for level two and so on until I get to level five again.

Whenever I get a cash payment, I put part of it back into the program to speed things up. Over time, you should make \$50% on your investment without recruiting. I do a little recruiting, mailing out 50 fliers a month. It brings in additional revenue.

Your initial enrollment package contains all of the program information. You will see how to move into the higher levels at will.

**No computer is needed.** This is not MLM, there are no products to buy and no personal selling.

Please fill out the enclosed entry form. You can start with only \$10 or you can choose additional entries to get your income coming in quicker.

Best wishes.....Ron

# WINDFALL ONE!®

## MULTI-LEVEL CYCLER FEATURING A DECLINING MATRIX FORMAT

EASILY AFFORDABLE ENTRY—\$10.00 MINIMUM; RECOVERED WITH YOUR FIRST PAYMENT!

PARTICIPANTS ARE LIMITED TO FOUR (4) LEVEL ONE ENTRIES PER PERSON OR ADDRESS WITH THEIR INITIAL ENROLLMENT, BUT OPTIONAL RE-ENTRIES ARE AVAILABLE EACH MONTH. THOSE SEEKING FASTER ADVANCEMENT MAY ALSO CHOOSE AN ALTERNATE SIGNUP METHOD.

INCREASING CYCLE, UPLINE, AND SPONSOR PAYMENTS AT EACH NEW LEVEL, AND AUTOMATIC "NO-COST" LEVEL ONE RE-ENTRIES, PLUS NEXT LEVEL ENTRIES WITH EACH SUCCESSIVE CYCLE!

## SPONSORSHIP IS ENCOURAGED AND REWARDED!

ALL FUTURE RE-ENTRIES OF PERSONALLY-ENROLLED MEMBERS ARE RETAINED BY THE ORIGINAL SPONSOR. YOU COLLECT UPLINE PAYMENTS FROM THOSE CYCLING ON YOUR FIRST LEVEL BELOW, EVEN THOUGH YOU MIGHT NOT HAVE PERSONALLY SPONSORED THEM!

A SINGLE \$10.00 ENTRY CAN POTENTIALLY PRODUCE THE FOLLOWING RESULTS, OVER TIME, AS IT PROGRESSES THROUGH EACH PROGRAM CYCLE!

**LEVEL ONE:** PAYS \$15.00, plus a \$10.00 Level ONE Re-entry, and a \$25.00 Level TWO Entry.

**LEVEL TWO:** PAYS \$30.00, plus a \$10.00 Level ONE Re-entry, and a \$60.00 Level THREE Entry, along with a \$15.00 Sponsor Payment, and \$15.00 Upline Payment.

**LEVEL THREE:** PAYS \$75.00, plus a \$10.00 Level ONE Re-entry, and a \$100.00 Level FOUR Entry, along with a \$25.00 Sponsor Payment, and \$25.00 Upline Payment.

**LEVEL FOUR:** PAYS \$125.00\*, plus a \$10.00 Level ONE Re-entry, and a \$200.00 Level FIVE Entry, along with a \$40.00 Sponsor Payment, and \$40.00 Upline Payment.

\* FIRST ENTRY CYCLE ONLY - \$100.00 MONEY IN A ZIP! Enrollment + \$25.00. All subsequent entries will pay \$125.00 each cycle.

**LEVEL FIVE:** PAYS \$500.00, plus a \$10.00 Level ONE Re-entry, a \$25.00 Level TWO Re-entry, and a \$60.00 Level THREE Re-entry, along with a \$75.00 Sponsor Payment, and \$60.00 Upline Payment.

**THIS IS THE SUPPLEMENTAL INCOME PROGRAM THAT EVERYONE NEEDS!**

**JOIN US TODAY IN THIS DYNAMIC NEW MONEY MAKER!**

☐ **YES!** I am selecting the option below to begin my cycling with **WINDFALL ONE!®**

☐ Enclosed is my payment of \$\_\_\_\_\_ for \_\_\_\_\_ Level ONE Entries (Max. 4) @ \$10.00 each.

☐ \$45.00 Upgrade Enrollment: Two (2) Level ONE Entries, plus One (1) Level TWO Entry.

☐ \$105.00 Quick-Start Enrollment: Two (2) Level One Entries plus, One (1) Level TWO, and (1) Level THREE.

Make checks and money orders payable to **JPA**. Cash should be sent securely or with a tracking number.

NAME \_\_\_\_\_ TEL \_\_\_\_\_

ADDRESS \_\_\_\_\_

CITY \_\_\_\_\_ ST \_\_\_\_\_ ZIP \_\_\_\_\_

INVITED BY

< < < > > >

RON KUSHNER

Lafayette Hill PA

**SEND ENTRY AND PAYMENT TO: JPA, PO Box 21781, Greensboro NC 27420-1781**

QUESTIONS? Contact us at: [jpaservices@ymail.com](mailto:jpaservices@ymail.com)

Copyright 2019 JPA Svcs. All rights reserved. Entry cost covers program membership, master copies of this flyer plus other info, and program administration expenses. **DISCLAIMER:** Membership does not guarantee the results shown in the example and returns can differ widely depending upon various factors including each individual's own efforts. Participants must be age 18 and older. Since all applicable payments are forwarded promptly to qualified recipients, there can be no refund requests. VOID WHERE PROHIBITED.